

# Good News!

October 2010

## Our Redeemer Lutheran Church



### Joint Ministry Task Force Report

For the month of September, the **Joint Ministry Task Force** between ORLC and Asbury has been meeting regularly.

So far we have been able to explore our common concerns and hopes for the future and are now at the stage to begin exploring what model of joint ministry might work best.

This has been exciting and hard work as we've heard about the realities each congregation faces going forward. Together we've been able to hear that both ORLC and Asbury need to reexamine their financial commitments going forward, both ORLC and Asbury are concerned about the extensive and sometimes exhausting time commitments our members are making just to keep "church" going, and finally we've

also heard that each congregation doesn't want to just maintain what it is doing but grow in its witness and sharing of the real presence of Jesus Christ.

As we look towards the future, these commonalities will guide and lead our discussions. We are still aiming to develop a model for joint ministry by the middle of November and will seek to keep each congregation informed as we progress.

If you should have questions about the process or what has been involved, please feel free to talk to any of the members of ORLC participating in this process:

**Pastor Andy, Dottie Gilbertson, Debby Chenoweth, Jim Anderson and Rick Denis.** We thank and covet your prayers for our work and this process.

### In This Issue . . .

A Word From Our Pastor	2
WELCA Minutes	3
News & Events	4-5
Worship Assignments	6
Calendar	7



# A Word From Our Pastor

Pastor Andy

Grace and Peace to you in the name of our living and loving Savior, Jesus the Christ!

I've been intrigued lately by a series of videos available to view on YouTube by somebody with the screen name "thatjustinguy". I haven't viewed all of his videos (There are hundreds of them) but I've viewed quite a few. I showed and will continue to show some of them to begin our worship services but the one I want to write this newsletter article about is this one (<http://www.youtube.com/user/thatjustinguy#p//u/35/Akq9B93ie7U>) titled *Lost and Found*.

The video is about the many and various things we lose. Sometimes the things we lose are the stuff of life like keys, remotes and shoes while other times it is things like our minds, our focus and our way. The video goes on to say that when we find ourselves lost one of the things we have to do is search. Search for a way out. Search for a way forward. Search in order to be found ...



We've been searching for quite awhile here at Our Redeemer.

Searching for what it means to be church in our day and age. Searching for what our particular form of church is going to look like. Searching for how we are going to walk faithfully into God's promised future. And I think that our search has been a good one. We've gained power and voice in that search. We've gained perspective and insight into what all these things mean. We've gained advocates and partners in our community who are beginning to think highly of how we've gone about our search. But most of all, I think, we've hopefully gained a sense that God is out there searching for us as well.



God is searching for us in the world looking to meet us as we meet others. God is out there searching for us as we seek to find ways to increase the impact of what we know and hear through our faith, through our scriptures, through our lives. God is out there searching for us helping us to not only "be found" but also to find new avenues for ministry, new opportunities to love others, new path ways to follow. God, even as we search for a way forward in our lives, is searching for us as well.



I hope that this is reassuring news for you. I hope that you feel wanted, needed, desired not just by me, not just by our church, but by the God who calls you a friend. I hope you, deep within you, feel the embrace of a loving and living Creator who has walked into our world and embraced us with a love that will never go away. I hope you feel these things because I do as I serve here with you.

In Peace,

Pastor Andy

## **WELCA Meeting Minutes**

(The minutes for Council that normally appear here, are not available due to some vacations!)

**Attending:** Kathy T., Kathy R., Roberta, Dottie, Linden, Rose, Marlene, Della, Kristen, Blanche

The meeting opened with devotions "Start Every Day Right" by Pres. Kathy Terry.

The May minutes were read and approved, following a motion to do so by Kathy R. and a second by Kris.

Roberta gave a treasurer's report of \$3213.63 in checking and \$55.75 in savings. Regarding the anniversary celebration, a check to Hood River Inn included paid attendees plus overhead costs of the banquet, and we will be reimbursed by ORLC for those paid reservations. It was reported that WELCA also paid the \$270 gratuity at the banquet. The treasurer's report was accepted by all following a motion by Kathy R. and a 2<sup>nd</sup> by Della.

A motion was made by Rose and Della seconded it to pay \$413.76 to cover the cost of tablecloths, valances, albums and the shade for the Pastor's office, vote carried.

### **OLD BUSINESS**

Retreat – We did not have a breakdown of items covered by the \$4300 check for the 2009 retreat. It was brought up that the only expenses over the cost of lodging was probably the \$400 speaker's fee and room and board for her and her companion, as each attendee paid for their lodging in full. We did not receive matching funds this year, so it was hoped to keep expenses within the proceeds made at the yard sale, after tithing.

Chili Cook-off- Linden reported having 5 entrants so far. We discussed games and will stay with Bingo as all ages can play. The date is set for Oct. 16<sup>th</sup> at 5:30, and the proceeds from this event will go toward repairs or small purchases in the kitchen and Fellowship hall. A motion by Kathy R. and 2<sup>nd</sup> by Della, carried. Items needed are roller blinds in the Fellowship Hall and 2 4ft. tables. Dottie said that tablecloths, albums, valances and a shade for Pastor's office had been purchased for a total of \$413.76. Rose moved to pay this amount and it was seconded by Marlene, motion passed. There was a suggestion that a gumbo challenge between Jim A. and Nathan K. during Mardi Gras could be a planned event for early spring and we will check on this possibility, and discuss at our next meeting.

Yard Sale- We had a successful day with sales totaling \$620, with the tithe going to Mid-Columbia project which helps seniors with yard work and small projects, which will be on Oct. 2<sup>nd</sup>. A motion to use the tithe for this project was made by Kris and seconded by Della, motion passed. The balance will go towards the Women's Retreat expenses. Because there are no matching funds, a need for another fund raiser was discussed, with no decisions made, but it will be brought up at the next meeting.

Kathy brought up the need for more drivers to bring members to church, and at present, there are about five who need rides from Down Manor, so two drivers may be needed each Sunday. We have 2 or 3 at this time, but would like to have some that could be called on if needed.

### **NEW BUSINESS**

Election of Officers for the coming year was discussed. There will be two openings, with Roberta retiring as treasurer and Blanche leaving as Secretary.

Kathy Rice offered her services as treasurer and Kris said she would take the secretarial position. Without any other nominations, Dottie made a motion to accept the slate as offered and Della seconded, all approved.

**WELCA National Conference** will be held in **July, 2011 in Spokane, WA.**, everyone was encouraged to attend as it is within driving distance and an inspiring event for women of the church.

Our next general meeting will be on **Jan. 29<sup>th</sup> or Feb. 5<sup>th</sup> at 11 am**, with members to be notified of the decided date. The meeting adjourned and attending members enjoyed a tasty lunch of salads and dessert. Kaylin was the daycare attendant for the two little ones.

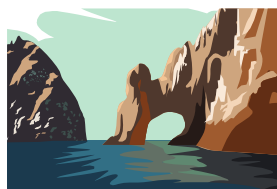
Respectfully submitted by *Blanche Donahue*

**Join us for the 12th Annual  
ORLC Women's Retreat  
November 12 – 14, 2010**

Retreat is at the Cannon Beach Christian Conference Center, in the oceanfront building. A **\$75.00 deposit** is due **before November 1st**. A confirmation letter and schedule will be mailed upon receipt. A sign-up sheet for attending is in the narthex or you may email the church office to let us know, [orlc@gorge.net](mailto:orlc@gorge.net) . If you have questions regarding payment or room assignment, please call **Jennifer Fowler at the church office, 541-386-3993** .

Room Rates are as follows:

1 guest per room	\$167.00
2 " " "	153.00
3 " " "	139.00
4 or 5 " "	127.00



Our speaker is **Rev. Susan Kintner**, Assistant to the Bishop for the ELCA, Oregon Synod. Susan began her role as Assistant to the Bishop on November 1, 2007. Pastoral care and spirituality have been her primary passions in ministry. She has three years of experience as a hospital chaplain. The conversation of health and faith is an important one to her. Susan and John Reiser were married in 1984. They have two children, a son who is high school junior and a daughter in eighth grade. She is an avid reader, bird watcher, and bread baker.

We will have our last session on Saturday afternoon rather than evening. After Saturday dinner in the dining room, your evening will be yours for more relaxing, shopping or games. **For more information call Cheri Anderson at 509-493-3359.**

Your retreat committee members this year are Cheri Anderson, Linnea Denis, Jennifer Fowler, Kris White.

**Faith In Action/Green light Project**

ORLC Faith in Action Committee is gearing up to fill and hand out the Green Light bags the end of October and early November. Our target areas this year will begin at White Salmon, and hopefully Odell Food Banks. **Sunday October 17**, we will meet for pizza, including those from Asbury who are interested in learning about our outreach effort, and, with the help of the confirmation class, we will fill the bags assembly line style. Our goal, according to our budget, is to fill and distribute 75 bags. Please refer to the ORLC web site to find out more about this wonderful on going project in the mid Columbia region.

Sharon Pantely



**Be Sure to Vote!**

If you own products in Thrivent Financial for Lutherans (for example Insurance or Annuities etc) you can now DESIGNATE where some of your Benevolent Dollars go (including Our Redeemer's). Dollars can help fund special projects such as Green Light, Quilting, Garden etc.

Members should have or will receive a letter in the mail about Thrivent Choice, the charitable grant program.

The letter lists three quick, easy steps to help direct these Choice Dollars.



**Confirmation and Sunday School Schedule**

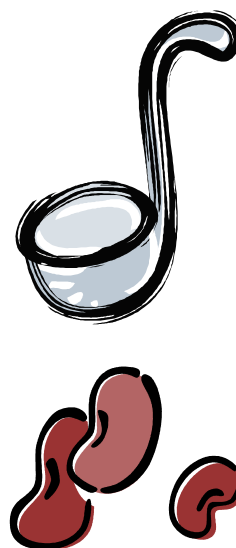
Both classes will meet the dates of October 3, 10, and 17th. Sunday School meets after Worship & Fellowship. Confirmation class meets at 3:30pm.

## 5th Annual Chili Cook-Off Reformation Celebration October 16th, Saturday, at 5:30pm

We need chefs willing to share their best recipes with a crowd of Hungry people! We need folks willing to sample various creative talents of meat, beans and vegetables! We need people ready to come eat, play bingo, and have fun on a Saturday evening all for the sake of fellowship and laughter!

Up for grabs is **The Silver Ladle Award**, Our Redeemer's most prestigious award for chili excellency. Sign up your chili on the sheet in the narthex and come prepared with a pot or crock big enough for a crowd. \$5.00 at the door gets you a bottomless bowl of all-you-can-eat chili and fixins plus 5 tickets to vote on your favorites. Kids eat free. After we eat, we clear the tables for an evening of bingo. Spare pocket change marks your spot and then is donated afterward to the event. Bring a white elephant gift appropriate for adults or children. All proceeds go to help WELCA fund new items for the kitchen and fellowship hall. Questions?

See or call *Linden Wendle* 541-386-6777



### How much do you remember from the 50th Anniversary banquet?

1. How many members from the 1960's were present?
2. What did John Crown's memories consist of? Hint: he gave us some examples.
3. What prop did Nicole Gilbertson use during her reminiscing?
4. Did Jennifer Havig play Baby Jesus during the Christmas Nativity when she was 4 days old? Why or why not?
5. Who were the quietest children in the back corner of the banquet room? Will and Charis, or Madeline, Amy, and Ethan.

Good Luck! Answers are on the back page.

### Member News

#### Pantelys in South America

In early September, George Pantely flew to Lima, Peru, where he began a month long commitment to volunteer teach Cardiology at a Medical School Hospital through Health Volunteers Overseas. Sharon is joining him for his last week and a half, after which they will travel to Quito, Ecuador, see some of the area and then spend a week on a guided tour of the Galapagos Islands. Debby Chenoweth will meet them in Quito for the last portion of this trip. Everyone will return to Hood River in mid October, and will be eager to share about the diversity of this trip. They hope to be good ambassadors for our country in another part of our fragile world.

Here is **Danielle Rich's** college address in case anyone would like to slip her a message from back home. Danielle was ORLC's nursery sitter. Danielle is in need of letters or notes from those she knows. The first semester at college can be a big adjustment!

Danielle Rich  
University Village  
1321 E 4600 So. #1432  
Ogden, UT 84403

# Worship Assignments

*If you find that you cannot serve on the date you are listed, please make arrangements for a substitute.*

2010	Oct 3	Oct 10	Oct 17	Oct 24	Oct 31
<b>Asst Minister</b>			Kris White		
<b>Lector</b>	Della Henderson		Jennifer Fowler		
<b>Acolyte</b>					
<b>Greeter/Usher</b>	Skip & Jennifer Fowler			Bob & Kris White	Ulrich & Karen Goebel
<b>Coffee Hour</b>	Rose Miller Della Henderson			Bob & Kris White	
<b>Flowers</b>	Jennifer Fowler				
<b>Altar Care</b>	Sally	Havig	and	Kathy	Terry

Nursery will be staffed weekly

## Committees, Councils, and Meetings of ORLC

**Church Council**

**2nd Tuesday of each month @ 7pm**

**2010 Members :**

Dottie Gilbertson (President), Rick Denis (V.P.),  
Kathy Terry (Sec.), Cheri Anderson, Randy Church,  
Rose Miller, Frank Moore

**Financial Officers:**

Linnea Denis (Treasurer), Jennifer Fowler (Fin. Sec.)

**WELCA**

Kathy Rice & Kathy Terry (Co-Presidents),  
Roberta Schweller (Treas.) Blanche Donahue (Sec.)

**Worship Committee**

Contact Audrey Bentz for meeting times

**Evangelism Comm.**

Contact Don Shalhope for meeting times

**Faith in Action**

Contact Sharon Pantely for times

**Mutual Ministry**

Contact Pastor Andrew Wendle for times

**Women's (WELCA) Bible Study**

4th Tuesday of each month  
Check calendar for location

**Down Manor Bible Study**

Wednesdays at 10:00am

**Quilting**

1st and 3rd Wednesdays  
At 9:00am, Fellowship Hall



Sunday	Monday	Tuesday	Wednesday	Thursday	Friday	Saturday
					1	2
3 10am Worship 11 Fellowship 11:15 Sun. Schl 3:30 Conf. Class	4 <b>Columbus Day</b>	5	6 10am Down Manor Bible Study	7	8	9
10 10am Worship 11 Fellowship 11:15 Sun. Schl 3:30 Conf. Class	11	12 7pm Council Meeting	13 10am Down Manor Bible Study	14	15	16  Chili Cook-off 5:30
17 10am Worship 11 Fellowship 11:15 Sun. Schl 2pm Cardmaking 3:30 Conf. Class	18	19	20 10am Down Manor Bible Study	21 <b>Fall Begins</b>	22	23
24 10am Worship Sun. Schl Drama 11 Fellowship	25	26 7:00pm Ladies Evening Bible Study	27 10am Down Manor Bible Study	28	29	30
31 10am Worship 11 Fellowship 						

- Women's Quilting is the 1st and 3rd Wednesday at 9am in the Fellowship Hall.
- Narcotics Anonymous, Sundays & Thursdays from 7:30-8:30 in the Fellowship Hall.
- Cleaning on first and third Saturdays.

In case of emergency of if you are in need of pastoral care, please contact  
Pastor Andrew Wendle at 541-490-6703.

## Answers to Banquet Questions

1. Ten people
2. Songs and music; he has a beautiful voice.
3. She used a large white cloth; Her mom used these when baking.
4. She did not play Baby Jesus; she cried too much!
5. Will and Charis. Madeline, Amy, and Ethan were playing Ninjas, and had to be “shushed” quite frequently!

.....  
: **November Newsletter submissions** :  
:

Due: October 21, 2010 Send to:

[orlc@gorge.net](mailto:orlc@gorge.net)

.....

Our Redeemer  
Lutheran Church  
1140 Tucker Road  
Hood River, Oregon 97031  
Phone: 541-386-3993  
E-mail: [orlc@gorge.net](mailto:orlc@gorge.net)  
[www.lutheranchurchhoodriver.org](http://www.lutheranchurchhoodriver.org)